

Self-Propelled Telescopic Booms

SX-125 XC™

Specifications

Models	SX-125 XC
Measurements	Metric
Working height maximum*	40.10 m
Platform height maximum	38.10 m
Horizontal reach maximum	24.38 m
Below ground reach	2.69 m
▲ Platform length - 8 ft model	0.91 m
Platform length - 6 ft model	0.76 m
▲ Platform width - 8 ft model	2.44 m
Platform width - 6 ft model	1.83 m
▲ Height - stowed	3.05 m
▲ Length - stowed	14.25 m
Length - transport (jib tucked under)	12.19 m
▲ Width - axles retracted	2.49 m
Width - axles extended	3.94 m
▲ Wheelbase	4.11 m
▲ Ground clearance - center	38.1 cm

Productivity

Maximum lift capacity - unrestricted	300 kg
- restricted	454 kg
Platform rotation	160°
Vertical jib rotation - up/down	135°
Turntable rotation	360° continuous
Turntable tailswing - axle retracted	0.56 m
Turntable tailswing - axle extended	1.02 m
Drive speed - stowed	4.9 km/h
- raised (below 125 ft)	0.6 km/h
Gradeability - stowed**	40%
Turning radius - axle retracted: inside	8.03 m
outside	9.96 m
Turning radius - axle extended: inside	2.90 m
outside	6.17 m
Controls	12 V DC proportional
Tyres - RT foam filled	445D50/710HD

Power

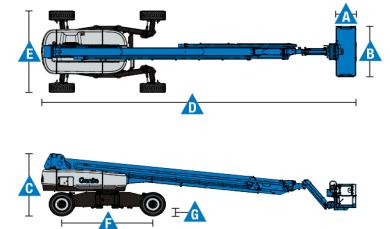
Power source	Deutz TD 2011 L04i, 55 kW (74 hp), Stage IIIA Deutz TD2.9 L4, 74 hp (55 kW), Stage IIIB
Auxiliary power unit	12 V DC
Hydraulic tank capacity	208 L
Fuel tank capacity	151 L

Weight***

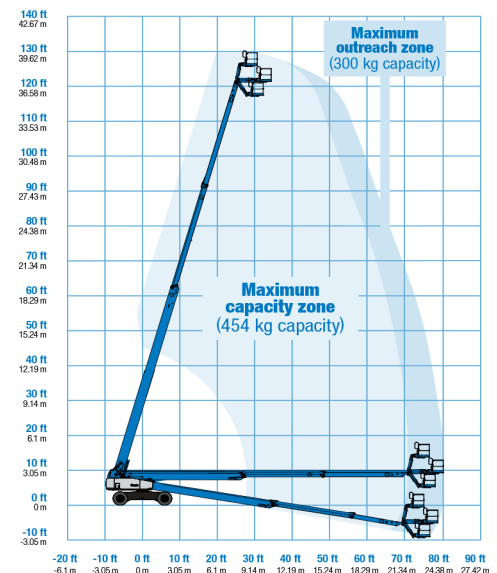
4WD	20,700 kg
-----	-----------

Standards Compliance

EU Directives: 2006/42/EC - Machinery (harmonized standard EN280); 2004/108/EC (EMC); 2000/14/EC (Outdoor Noise)



Range Of Motion SX-125 XC



* The metric equivalent of working height adds 2 m to platform height. U.S. adds 6 ft to platform height.

** Gradeability applies to driving on slopes. See operator's manual for details regarding slope ratings.

*** Weight will vary depending on options and/or country standards.